



Precast segments used for the Sydney Metro City & Southwest project.

Eastern Creek Precast Facilities Review of Environmental Factors

Have your say

Sydney Metro is Australia's biggest public transport project and a once-in-a-century infrastructure investment, transforming Sydney with a world-class metro.

Sydney Metro West would connect Greater Parramatta with the Sydney CBD and involve the construction of around 24 kilometres of twin tunnels. Confirmed stations include Westmead, Parramatta, Sydney Olympic Park, North Strathfield, Burwood North, Five Dock, The Bays and Sydney CBD. This infrastructure investment would double the rail capacity of the Greater Parramatta to Sydney CBD corridor with a travel time target between the two centres of about 20 minutes.

Sydney Metro is proposing to construct two adjacent precast facilities on an approximately 17 hectare site at Lenore Drive, Eastern Creek to support the delivery of the Sydney Metro West project.

The site would be used to manufacture concrete segments needed to line the twin tunnels for Sydney Metro West.

The precast facilities would create about 120 jobs during construction and 120 jobs during operations.

Concrete segments would be made and stored on site and then be transported to each of the Sydney Metro West tunnelling launch sites where they would be stored until required.

Sydney Metro West – Eastern Creek Precast Facilities Review of Environmental Factors is open for public comment until 4 December 2020.

The Review of Environmental Factors considers potential environmental impacts of the proposal and measures to mitigate them.

These works are being assessed and determined by Sydney Metro in accordance with the Environmental Planning and Assessment Act.

Community members are invited to submit feedback on the proposal directly to Sydney Metro.

A report detailing submissions and any changes made to the project will be made available on the Sydney Metro website following the exhibition period.



Key features

The proposal would include both construction and operation of two adjacent precast facilities located at Lenore Drive, Eastern Creek.

Construction

Work is anticipated to start in early 2021 with finishing works progressing until late 2022. Work would occur during standard construction hours – 7am to 6pm Monday to Friday, and 8am to 1pm on Saturdays.

Construction would involve:

- site preparation works like clearing and levelling
- installing environmental controls, utilities, fencing, amenities and site offices
- building works to create internal roads, site parking, sheds and compounds for the facilities
- finishing works to fit-out the facilities including landscaping the site.

Sydney Metro is working with Transport for NSW to provide access to the precast facilities. Transport for NSW will construct a new section of Archbold Road from Lenore Drive, and an access road between the southern and northern facilities. This work is subject to assessment and determination by Transport for NSW. These road works would be planned to coincide with the precast facility construction works. Further extensions to Archbold Road would be completed at a later stage.



Inside the Marrickville precast facility.

Precast segments ready to be transported.

Operation

The southern precast facility is expected to start operating from around mid-2022 and the northern facility from late 2022 to align with the proposed tunnelling works planned on Sydney Metro West. The precast facilities would be required for around four to five years and would operate 24 hours a day, seven days a week. The facilities are not expected to be noisy.

Operation would involve:

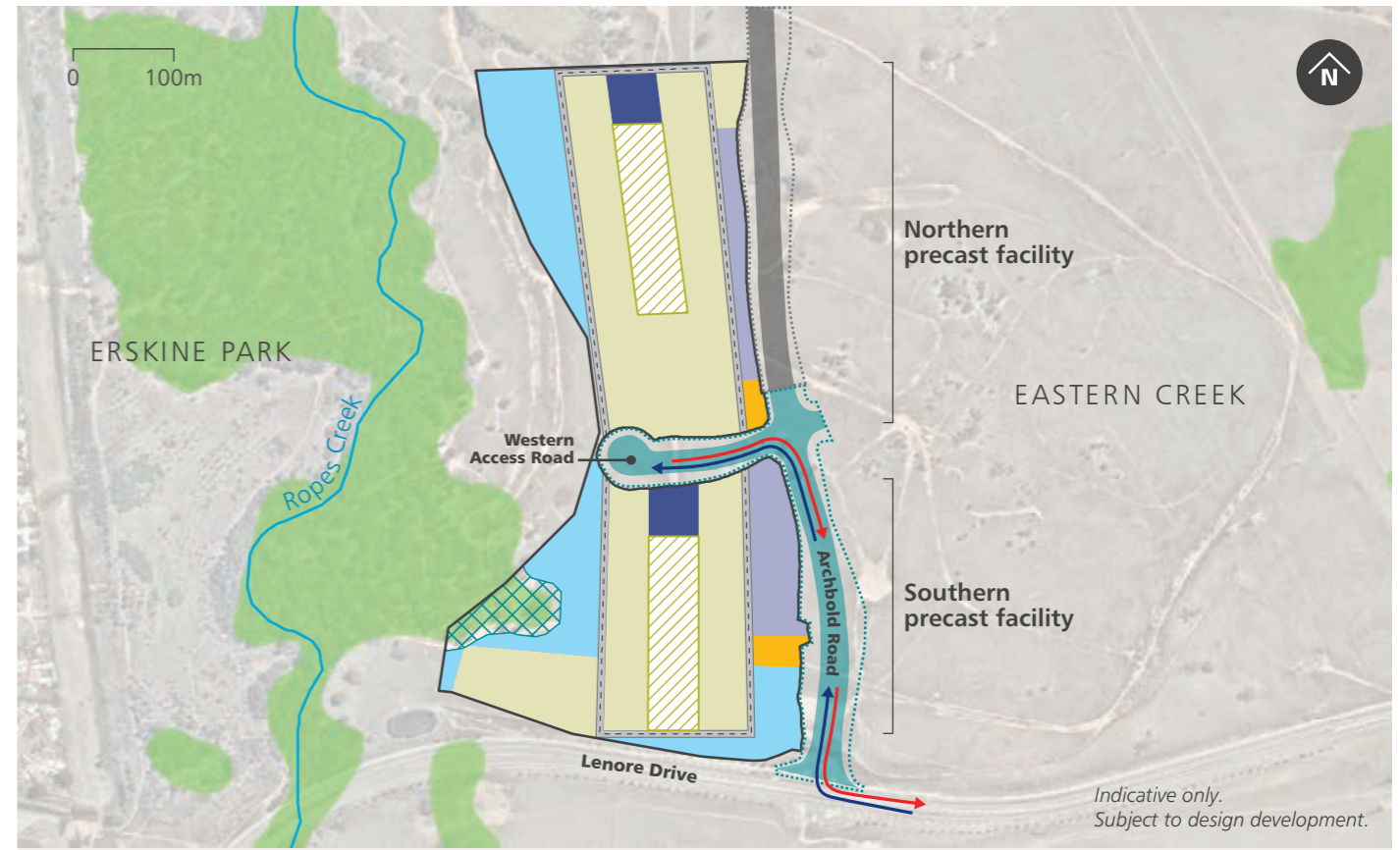
- delivery of raw materials like sand, aggregate and cement
- storage of materials
- making and storing the concrete segments
- loading and transporting the concrete segments to the Sydney Metro West tunnelling sites.

Managing construction and operation

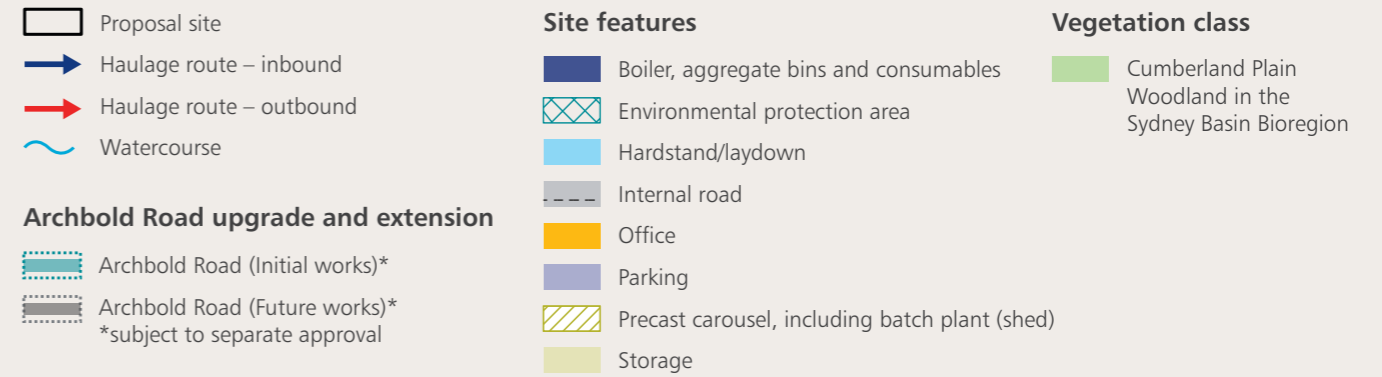
Specific measures to manage and mitigate potential construction and operational environmental impacts have been identified as part of the Review of Environmental Factors including coordinating with the Archbold Road upgrade works to minimise cumulative construction impacts.

A number of plans and strategies would be developed to manage potential site impacts. These would include a:

- Construction Environmental Management Framework – detailing the approach to environmental management and monitoring during construction
- Construction Traffic Management Framework – providing an overall strategy and approach for construction traffic management, including coordination across projects and NSW Government agencies.



Map of the proposed precast facilities in Eastern Creek.





Marrickville precast facility yard.

Have your say

The Sydney Metro West Eastern Creek Precast Facilities Review of Environmental Factors will be on public exhibition until **4 December 2020**.

Community members are invited to submit their feedback on the proposal to Sydney Metro by emailing sydneymetrowest@transport.nsw.gov.au or writing to:

Sydney Metro West, PO Box K659, Haymarket NSW 1240

Your submission should include:

1. Your name and address.
2. A statement on whether you support or object to the proposal.
3. The reasons why you support or object to the proposal.

More about the Review of Environmental Factors

The Sydney Metro team, including our project experts, are here to provide you with information about the proposed Sydney Metro West Eastern Creek Precast Facilities and to help you find out more about the Review of Environmental Factors. If you are having difficulty accessing any of the information available please contact us and we'll make arrangements to assist you.

- Visit sydneymetro.info to view the full Review of Environmental Factors and to sign up for email alerts.
- Visit sydneymetro.info/metrowest to view an interactive map of the project.
- Call us on **1800 612 173** and talk to one of our dedicated place managers.
- Email your queries to sydneymetrowest@transport.nsw.gov.au and we'll get back to you.

View precast segments being made and transported on the Sydney Metro City & Southwest project.



Contact us

 **1800 612 173** Community information line open 24 hours

 sydneymetrowest@transport.nsw.gov.au

 **Sydney Metro West**, PO Box K659, Haymarket NSW 1240

 If you need an interpreter, contact TIS National on **131 450** and ask them to call **1800 612 173**