

# Out-of-hours work lookahead – North Strathfield

April – June 2024

## Sydney Metro is Australia's biggest public transport project

The NSW Government is delivering Sydney Metro West – a new underground metro railway which will double rail capacity between Parramatta and the Sydney CBD, link new communities to rail services and support employment growth and housing supply.

Acciona Ferrovia Joint Venture (AFJV) has been awarded the contract to deliver 11 kilometres of twin metro rail tunnels between The Bays and Sydney Olympic Park and excavate five new metro stations, including a station at North Strathfield.

### Out-of-hours work lookahead

Some activities such as utility investigation work or work on busy roads must be carried out at night to minimise impacts on traffic and for the safety of workers, motorists and pedestrians. Please see below an overview of potential out-of-hours construction work within and around the North Strathfield Metro Station site for the next three months.

Activity	Location	Noise Impact	April 2024	May 2024	June 2024
Installation of a high voltage kiosk	Queen Street, between Waratah Street and Pomeroy Street	High	Up to 2 nights	-	Up to 6 nights
Queen Street sewer CCTV inspection	Queen Street from Pomeroy Street to Nelson Street	Low	Up to 2 nights	-	-
Extended concrete pours	Construction site	Low	Up to 2 nights	Up to 2 nights	-
Crane lifts of oversize equipment into and out of the station box	Queen Street, between Waratah Street and Pomeroy Street	High	-	Up to 2 nights	Up to 2 nights
Pavement restoration	Intersection of Concord and Wellbank streets	High	-	Up to 2 nights	Up to 2 nights
Repair to drainage	Pomeroy Street, Queen Street, Waratah Street and Wellbank Street	High	-	-	Up to 3 nights

Activity	Location	Noise Impact	April 2024	May 2024	June 2024
Hoarding maintenance	Queen Street, between Waratah Street and Pomeroy Street	Low	-	1 night	1 night
Oversize plant and equipment deliveries	Construction site	Low	Up to 3 nights	Up to 3 nights	Up to 3 nights
Environmental management and emergency work	Construction site		Only required in case of emergency		

Please note multiple activities will occur on the same nights. We plan to carry out work in one area for no more than three nights per week, with only two consecutive nights per week and no more than ten nights per month.

### Mitigation measures

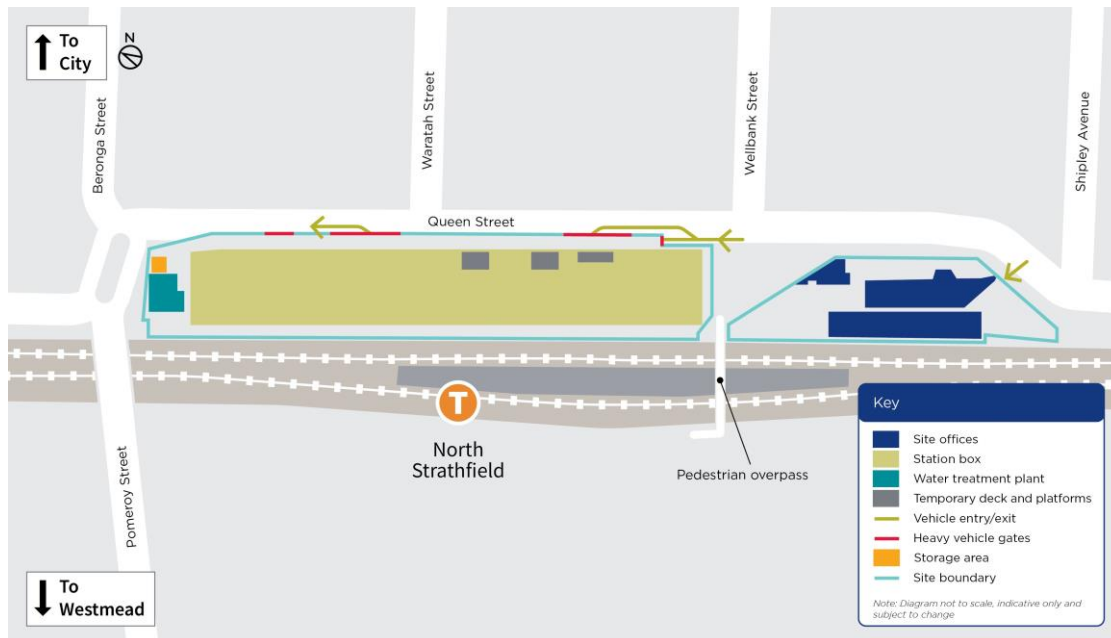
Depending on the type of work and expected impacts, a range of mitigation measures may be used such as completing the noisiest work before midnight, installing noise blankets around the worksite, implementing respite periods or providing alternative accommodation.

The project team will liaise with directly affected residents to provide more information and discuss mitigation options before the work. Separate notifications will be issued for all out-of-hours work activities.

### Feedback and enquiries

If you have an enquiry or would like to provide feedback about the work, including appropriate respite periods, please contact the AFJV community team on [1800 612 173](tel:1800612173) or [metrotunnelsAFJV@transport.nsw.gov.au](mailto:metrotunnelsAFJV@transport.nsw.gov.au)

### North Strathfield construction site



1800 612 173 Community information line open 24 hours

[metrotunnelsAFJV@transport.nsw.gov.au](mailto:metrotunnelsAFJV@transport.nsw.gov.au)

Sydney Metro West, PO Box K659, Haymarket NSW 1240



Access information in over 100 languages

Download **Sydney Metro Connect** from the App store or get it on Google Play.



If you need help understanding this information, please contact the Translating and Interpreting Service on **131 450** and ask them to call us on **1800 612 173**